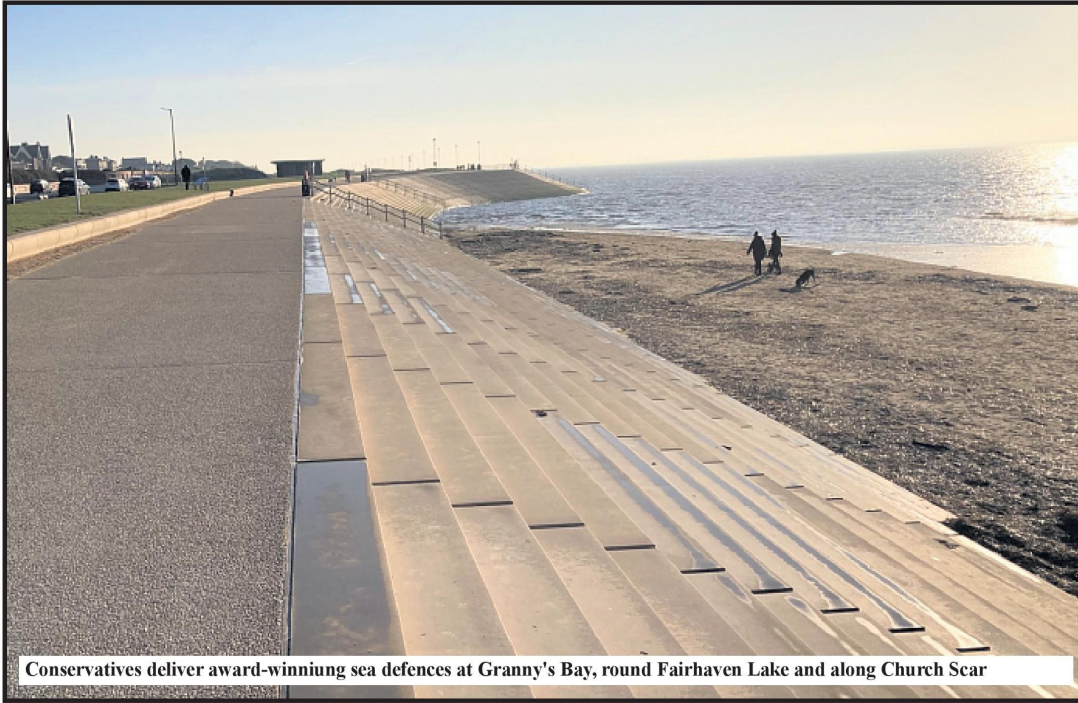


Our Plan for Fylde

Fylde Council Elections: Thursday 4 May 2023

Election Special

CONSERVATIVES: INVESTING IN THE FUTURE OF LYTHAM, ANSDELL & FAIRHAVEN

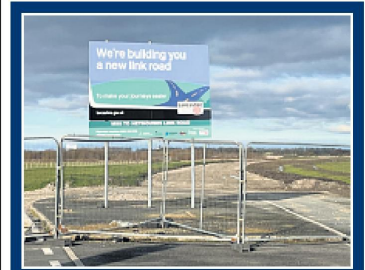


Conservatives deliver award-winning sea defences at Granny's Bay, round Fairhaven Lake and along Church Scar

Fairhaven Lake

The successful 18-hole Adventure Golf is set to pay back its £500,000 investment in just four years.

>>> Page 2



M55 Heyhouses link road to open this year

>>> Page 3

A track record of investing in Fylde

Over £80m supporting our communities and businesses

Our focus is to invest and improve Fylde whilst maintaining essential council services to a high standard.

During the pandemic the work on the £22m sea defence scheme around Fairhaven Lake and Granny's Bay was completed and this stunning coastal walk remains a popular destination. The project was nationally recognised, achieving the Institute of Civil Engineers' Sustainability Award in 2021.

A further £12m was secured for Kirkham High Street and £12m for the St Annes Sea Wall project and both of these

successful schemes by your Conservative-led borough council demonstrate our ambition to drive regeneration despite the challenging economic times.

During Covid £33m government grants were channelled through the council to 1,600+ recipients and were a lifeline to our small and medium businesses. Over £4m discretionary awards were made to 800+ local organisations, including grants to 28 new businesses to fill vacant premises in our town centres. Some 30 grants were also paid improving shop fronts on our high streets.

We worked closely with business groups and community organisations, a partnership that came together to support our bid for £2.6m shared prosperity funding which has been recently approved by the Government.

This has all been achieved by your debt-free council with no increase to Fylde Borough Council's council tax contribution this coming year.

Only by voting Conservative can you ensure a continuing great programme of investment across the whole of Fylde.



Lytham Hall New driveway funded by Fylde Council eases access to the Hall.

>>> Page 4

Our Plan for the continuation of sea defences

Following on from the successful project around Fairhaven Lake, Granny's Bay and Church Scar, work to replace the existing 660 metre sea wall around The Island site in St Annes is scheduled to start this Autumn.

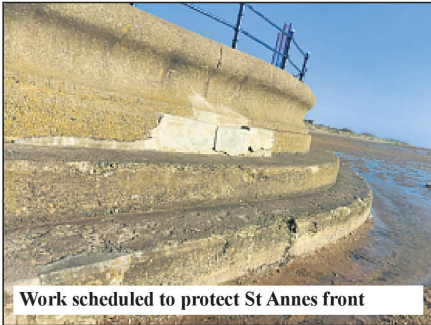
Protecting the sea front for future generations

The crumbling sea wall, which was originally constructed in 1935, will be fully restored and raised, funded by £9.7m from the Environment Agency and £2.4m investment from the

council's capital programme.

The new sea wall will protect over 500 businesses and residents from flooding given the projected sea level rise, and will manage coastal risk to the natural dune and beach defences.

This major project will be staged over two years to minimise disruption to local tourist attractions. It is the catalyst for a greater vision at the Island site as part of a Masterplan for St Annes with a holistic plan of exciting new projects from the railway station to the sea.



Work scheduled to protect St Annes front

Major improvements delivered on budget at Fairhaven Lake

More than £4m on restoration and new attractions in recent years.

Fylde Council was awarded National Lottery Funding to conserve and restore Fairhaven's heritage buildings and landscape, improve the lake's infrastructure and water quality, and provide an exciting new programme of events.

Together with funding from Fylde Council, Sport England and Lancashire Environment Fund, the total amount budgeted since 2015 at the Lake is £4.1m. The restoration of the three heritage buildings on site; Pagoda, Watersports Centre and the Café are all complete, as is the work to uncover and restore the Japanese Gardens.

Beautiful new heritage lighting posts and lanterns were installed last year to give visitors more time to enjoy the amenities in the winter months, while preserving the character of the park. Re-surfacing of the pathways around the Lake are underway and the



New adventure golf attraction at Fairhaven Lake is a huge success

Adventure Golf will pay back investment within four years

toilets at Stanner Bank entrance have had a facelift. In terms of leisure, the Adventure Golf attraction has been so popular that it is predicted to recoup the capital expenditure of £500,000 within four years. In addition, new play facilities, new motorboats and

paddleboards, resurfaced tennis courts and a year-round programme of activities all add to the attraction of this landmark site, as advertised on the Fairhaven Lake and Gardens Facebook page. Next steps are to dredge the lake to restore the depth and clarity of the water to benefit and extend the activities we can offer.

Fylde Conservatives are proud to have steered these projects despite the difficult Covid years and some opposition to its development.

Our Plan for a greener Fylde

More tree planting, wilding corridors, electric charging points, carbon reduction schemes and flood prevention measures.

A five-year extension and £1m funding was granted to the Fylde Sand Dunes Project in 2022 to improve our natural sea defences and preserve wildlife habitat.

Over Autumn our Fylde Ranger service, together with the help of councillors and community volunteers, planted 600 trees across the borough to improve the air we breathe and support wildlife. To boost this initiative further and include wilding corridors, we have added £25,000 to this budget.

Flash flooding is an increasing problem across Fylde. Whilst not the direct responsibility of Fylde Council, we are contributing to schemes which reduce surface water flooding, such as at Park View playing fields, and have boosted staff resources to tackle this issue locally. We are also working in partnership with the Environment Agency, Lancashire County Council and United Utilities to ensure their responsibilities are fulfilled.

Our Climate Change Action Plan builds on the great work

already started to recycle Christmas trees on the dunes, install hydration points to re-fill water bottles, a bucket and spade exchange on the beach, new electric fleet instead of diesel and extra electric vehicle charge points. Looking ahead, we have commissioned a carbon footprint study to benchmark future schemes against.



Pleasant Street car park electric charging point



Delivering the new link road will greatly alleviate traffic congestion along Ballam Road and Queensway

Our Plan for a better connected Fylde

Better rail, roads and ultra-fast internet on the horizon.

The long-awaited M55 Heyhouses link road is due to complete this year with a brand new road built and the original moss road repaired to accommodate pedestrians, cyclists and equestrians.

Fylde Council contributed £2m to this £27m scheme which will alleviate congestion on Queensway and provide a direct link to the motorway. The A585 upgrade and the new Junction 2 from the M55 are further welcome improvements to our highways infrastructure.

In terms of rail, a strategic outline business case commissioned by Fylde Council has been submitted to the

Government in support of a passing loop on the South Fylde line in order to increase train frequency from hourly to half hourly. In addition, compulsory purchase of land at Squires Gate railway station will allow a level access to the platform for disabled travellers.

A new transatlantic cable into Blackpool Airport Enterprise Zone brings opportunity for data centres and greater internet speeds to support future technologies. The potential is on our doorstep to create a thriving digital economy and high-value jobs.

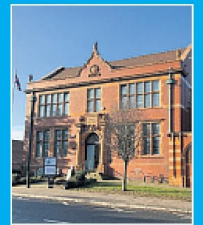
What local people are saying...



Fylde Council Leader, Karen Buckley, says: "The windmill is loved by residents of Lytham and also right across the borough. It was an absolute priority for us to have the sails rebuilt and reinstated."

Lytham windmill sails restored
April 2022

Ben Aitken, Chairman of the Friends of Ansdell Institute, says: "We are very appreciative of the Covid grant from Fylde Council of £18,500 towards a new kitchen area of the cafe."



Ansdell Institute
Extra funding have improved facilities



Mark Menzies, Member of Parliament for Fylde, says: "Only a strong Conservative team is able to deliver these improvements. Vote for your local Conservative candidates at the forthcoming elections."

Vote for the Fylde Conservative Team
Delivering for the residents of Fylde

Our Plan for active family days out

Your Fylde Conservative-led Council supports tourism and leisure, providing funding and promotion for an extended season of events.

The hugely successful Lytham Festival and 1940s Weekends take centre stage and are complemented by the Kite Festival and growing number of Beach Events. Our Fylde Rangers work closely with Park View 4U to add to their educational and craft programmes, which have been a sell out, and led the River

Ribble Ramble raising money for Children in Need. Along the seafront at St Annes, the new

£300,000 Wind Sports Centre provides a tremendous

facility for the kite surfing and land yacht club, and a pit stop at the council-owned Beachcomber Café for those walking the beach.

The watersports centre at Fairhaven Lake offers group and one-on-one sessions for canoeing, kayaking and stand-up paddle boarding. Over recent years, a

£500,000 rolling programme of improvements to transform our parks has meant safe, family fun outdoors. New play equipment and surfacing has been installed at: Ashton Gardens, Promenade Gardens, Mornington Rd, Hope Street, Hove Rd, Waddington Rd, South Park, Lansdowne Rd and Blackpool Rd North. With the beautiful new rose gardens at Lowther Gardens, these investments demonstrate our commitment to improve the quality of life for all our residents and visitors.



Eco Makers Market at Fairhaven Lake, April 2022

Our Plan for Lytham boosted to £1.2m for major improvements

Fylde Conservatives recognise Lytham's unique place in Fylde, the home of Lytham Hall and original family seat of the Clifton Family, as well as the site of the iconic windmill, a popular local theatre and venue for a hugely successful music festival.

Over this current council period, repairs have been made to the sea wall near the lifeboat station; the windmill had all four sails replaced after storms in November 2021; new specially designed lighting columns have been installed along the front; and a full programme of painting the street furniture completed to maintain the high standards that residents expect.

Support to businesses

with shopfronts and vacant premises grants were distributed from the discretionary Covid grants scheme to help keep the high street vibrant. The long-standing problem of

New lighting is welcomed along Lytham Green

flooding at Park View was tackled with important drainage work being funded by Fylde Council. A grant towards Lytham Lights of £7,500 every year helps attract Christmas shoppers.

A major project of renovation along the pavements of Clifton Street was delayed through Covid but further capital has since

been added to this programme which, at £1.2m, will make a significant difference to the high street. Plans have been shared with Lytham Business Partnership and the project will be programmed for 2023-24.

Lowther Pavilion receives annual financial support from Fylde Council. The Gardens, which date back to 1872, are managed by a Trust but benefit from Council staff to keep it looking magnificent all year round. We supported the installation of the Bobby Ball statue and the most recent project is for a newly designed rose garden, a herb garden, footpath resurfacing and more tree planting.



The next stage of the project is to improve the high street

Our Plan to protect Fylde

We are proud of where we live and most people take great care of their neighbourhood.

Our enforcement teams tackle those that don't and our community volunteers provide a hugely valuable resource, for which we are grateful.

Drinking to excess in public, uncontrolled dogs, littering, and begging are all environmental offences. Warnings, fines and court action can be taken as a last resort.

Bathing water quality

is a priority and we call upon the Environment Agency and United Utilities to identify and reduce pollution and the Government to further tighten regulations for sewage discharge. The quality of our water is vitally important and must be improved going forwards.

We will strengthen partnerships so that work is focused on Fylde and funds are secured to achieve a clean and safe environment for all.



Replacement wall and railings protect the Green

Supporting investment at Lytham Hall

Lytham Hall is our borough's only Grade I listed building and, as such, is supported by Fylde Council in our Corporate Plan. To date we have invested around £500,000 towards its upkeep and improvement, the latest being the refurbished driveway from the main gate up to the Hall.

We are proud to contribute to the hard work and dedication of the staff, trustees and volunteers at the Hall which has borne fruit with their recent joint win of the prestigious Historic Houses Restoration Award 2022.

Our current project is the refurbishment of the Long Gallery at a cost of £65,000 making it fit for purpose for the display of the Lytham St Annes Art Collection (which will be free entry to all), followed by an extra £75,000 for drainage work to create a new car park at the 'Paddock'.



Lytham Hall Long Gallery to display LSA Art Collection

**CONTACT YOUR
LOCAL FYLDE
CONSERVATIVES**



www.fyldeconservatives.org



office@fyldeconservatives.org



Fylde Conservative Association,
3 Richmond Road, St Annes FY8 1PE